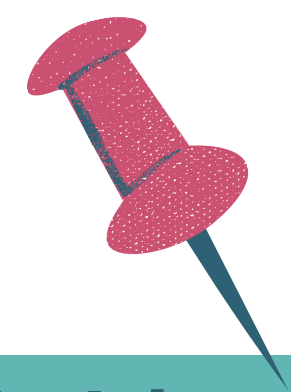


# AP HUMAN GEOGRAPHY EXAM



Created by Susan Hu

 **2 hours and 15 minutes**

**Exam Date**

TUESDAY,  
May 4th, 2021



## Themes (Big Ideas)

1. Patterns and Spatial Organization
2. Impacts and Interactions
3. Spatial Processes and Societal Change

## Weights



**Unit 1:** Thinking Geographically 8–10%

**Unit 2:** Population and Migration Patterns and Processes 12–17%

**Unit 3:** Cultural Patterns and Processes 12–17%

**Unit 4:** Political Patterns and Processes 12–17%

**Unit 5:** Agriculture and Rural Land-Use Patterns and Processes 12–17%

**Unit 6:** Cities and Urban Land-Use Patterns and Processes 12–17%

**Unit 7:** Industrial and Economic Development Patterns and Processes 12–17%

## I. Multiple Choice Questions



**Exam Weighting: 50%**

- 60 questions
- 60 minutes
- The multiple-choice questions will include both individual and set-based questions.
- Approximately 30 to 40% of the multiple-choice questions will reference stimulus material, including maps, tables, charts, graphs, images, infographics, and/or landscapes, roughly evenly divided between quantitative and qualitative sources.

## II. Free Response Questions



**Exam Weighting: 50%**

- 3 questions
- 75 minutes
- Each free-response question presents students with an authentic geographic situation or scenario and assesses students' ability to describe, explain, and apply geographic concepts, processes, or models, as they analyze geographic patterns, relationships, and outcomes in applied contexts. **Free-response question 1 does not include any stimuli; Free-response question 2 includes one stimulus (data, image or map); and Free-response question 3 includes two stimuli (data, images, and/or maps).** At least two of the three free-response questions assess students' ability to analyze across geographic scales to explain spatial relationships.